

# Witney Town Council Winter Newsletter

## 50th Anniversary Edition

### A Festive Thank-You

**As we head into the festive period Witney Town Council would like to thank local businesses for their generous support of the town's Christmas lights display.**

The Corn Exchange Tree has been sponsored by H & OB Builders and the tree at the Buttercross, and the Children's Light are both sponsored by Estate and Lettings Agents, Scott Fraser.

Their contributions have provided cheerful and eye-catching focal points amid the main display. The involvement of our sponsors underscores the importance of community partnership and the shared commitment to enhancing the festive experience.

Read more of the article on our website here:  
<https://www.witney-tc.gov.uk/news/christmas-sponsorship-a-big-festive-thank-you/>

### *In this issue:*

Christmas Light Switch-On  
Advent Fayre  
Christmas Competition Winners  
Witney Youth Council  
Witney Lake & Country Park  
News  
Winter Fuel Allowance  
Defibrillators  
Winter Activities  
50th Anniversary Events  
What's On At Corn Ex  
Advent Fayre  
Daytime Film Club  
Community Speedwatch  
Who does what?  
Council Information

# Witney's New Christmas Lights Will Boost Festive Spirit and Sustainability

Witney Town Council is pleased tonight to have unveiled an exciting new Christmas lights display, marking the first year of a contract with our new contractors, LITE. This upgrade is intended not only to refresh and enhance the festive lighting in Witney but also aligns with its commitment to sustainability and community engagement.

The Town Council has listened to residents, and its proactive engagement with high street businesses and landlords for display permissions and sponsorship has yielded valuable feedback, resulting in Christmas lights that provide exceptional value for Witney residents and businesses.

The programmable nature of some lights allows for dynamic displays that can be tailored to celebrate a variety of events and seasonal celebrations throughout the year (avoiding nesting season between the end of March and beginning of August).



Cllr, Ruth Smith commented; "The lights bring cheer to residents and visitors throughout the season. This new design means the display can be configured a bit differently each year. It also takes a range of feedback into account, such as additional lights along the raised part of Market Square, which add sparkle to plainer spaces such as the start of Corn Street. It also extends to shopping areas that were previously overlooked."

Sponsorship plays an important part in ensuring that Witney has a display to be proud of. This year local businesses have generously contributed to the cost of some of the lights and decorations. Estate Agent, Scott Fraser have sponsored, both the Buttercross Christmas tree and the light created by the winner of the ever-popular Children's Christmas Light Competition, and H & OB Builders of Witney are sponsoring the Christmas Tree outside the Corn Exchange.

The Town Council, in return, is a proud sponsor of the hugely popular Christmas Light Switch-On event, organised and hosted once again this year by the Rotary Club of Witney. This involvement showcases the Council's dedication to supporting community initiatives and celebrating local traditions.

With the lights now on everyone will be able to experience the magic of the enhanced Christmas display and enjoy them over the festive period as they light up the town through the darkest part of the year.

# Witney Christmas Light Switch-On

## CELEBRATING TOGETHER

We had a wonderful time last Friday as we hosted some members of the ICE Centre, young carers, and a group from the Witney Day Centre in the Gallery Room of the Corn Exchange Witney. Everyone watched the Christmas Lights Switch-On from the accessible space away from the crowds and the noise, with mince pies to munch on and hot drinks to warm us up.

The Witney Day Centre members had some interesting chats with the youth Councillors who were hosting the carers. We tasked the young councillors with finding out what the older guests would like to see them do for older generations. Among some interesting ideas, they mentioned they would like more ballroom dancing!

Our young councillors are brilliant and full of ideas so it will be exciting to see what kind of projects they can come up with.

It was also nice that everyone had an opportunity to meet and talk to Witney's MP, Charlie Maynard, Mayor, Owen Collins, The Vice Lord Lieutenant, Lynda Atkins DL, and the Town Crier, Jean Postlethwaite Dixon, who all joined us to celebrate the Christmas lights.

A heartfelt thank you to the youth councillors, the Witney Rotary Club for organising the switch-on, and our wonderful guests for attending!



# ADVENT FAYRE

29th December 2024

## Crafting with Santa Claus

We gathered for some festive fun at this year's Advent Fayre, in which children made snap-bracelets, reindeer food, jingle sticks, and Christmas cards to send to the family. Father Christmas received a lot of letters and requests for when he makes his deliveries, and gave hundreds of early presents for all the boys and girls that joined us.



It was a great event to get everyone in the Christmas spirit, with no ticket fee or purchase required. Free crafting fun for children of all ages!

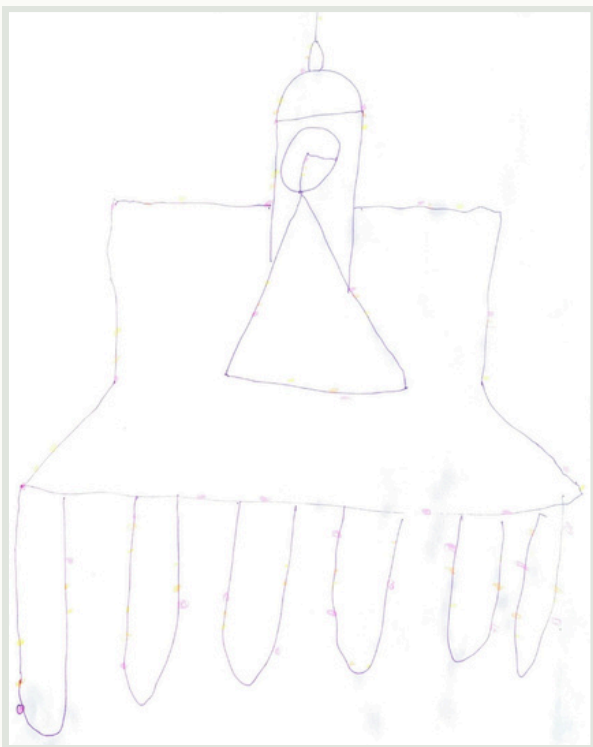


# Christmas Light Competition Winner

December 2024

## The Buttercross sparkles!

A beautiful design of the Buttercross in Witney won our Christmas Light Competition this year, drawn by the talented Isla, Age 9.



## Installing the Light

The Christmas Light has been installed with the other lights around town, stationed brilliantly on the side of the Town Hall.

## Building towards Christmas

Isla won a building block advent calendar and a letter of congratulations from the Deputy Town Clerk.



# Christmas Card Competition Winners

## Winning Artwork

### O' Christmas Tree

Our winner of this years' Christmas Card Competition is James, age 11, who drew this wonderful Christmas tree towering over the town at night.

This magical design will be the star of the Mayor's Christmas Cards that are sent to the friends and partners of Witney Town Council.



### Runners Up

Runners-up were awarded a Christmas Coloring Book along with pens, allowing them to keep their creative juices flowing!



It was undoubtedly challenging for Mayor Cllr Owen Collins to choose his favourites among the hundreds of outstanding submissions we received.

This is a competition we eagerly anticipate each year, and we are excited to see what entries will come in next time!

# Our Reindeer Winner

## That's not my name!

Our Community Window is all themed for Christmas and winter. Sitting beneath our Christmas Tree we have a rather beautiful brand new plushie reindeer. This was the prize for our Reindeer Naming Competition which we held over the weeks leading up to Christmas.

Vicky's name was drawn from all the entries and we have now named our reindeer Mistletoe! Congratulations Vicky for winning the competition and taking Mistletoe home!



The winner was chosen randomly out of a bowl.



# TIPS TO HELP SUPPORT WINTER WILDLIFE IN YOUR GARDEN FROM OUR BIODIVERSITY AND GREEN SPACES TEAM

- KEEP SOME OF THE LEAVES IN YOUR GARDEN TO MAKE 'MESSY AREAS' FOR BUGS, HEDGEHOGS AND OTHER CREATURES TO SHELTER IN
- IN COLD WEATHER, FAT BALLS ARE THE BEST FOOD FOR ANY BIRD
- TRY TO MAINTAIN A SOURCE OF UNFROZEN WATER FOR WILDLIFE AT ALL TIMES, SUCH AS PUTTING A SMALL BALL IN A POND TO KEEP THE WATER MOVING, OR REFRESHING A BIRD BATH DAILY IN COLD WEATHER



**WITNEY**  
TOWN COUNCIL



# Witney Lake and Country Park News

## Flooding on Mill Meadow

Recently, flooding has caused significant travel disruptions in Witney, but it has also facilitated the development of ecosystems within Mill Meadow. In September, scrapes were created to enhance the existing habitats for both current and new wildlife. With the recent influx of water, these areas have transformed into ponds, providing an ideal environment for reed growth.



*Drone Footage showing the creation of ponds on the flooded Mill Meadow*

# Am I eligible for Winter Fuel Allowance?

If you were born before 23 September 1958 you could get either £200 or £300 to help you pay your heating bills for winter 2024 to 2025. This is known as a 'Winter Fuel Payment'.

You may be eligible if you or your partner get certain benefits.

You will not get the extra Pensioner Cost of Living Payment given in 2022 and 2023. It stopped in winter 2023.

Aside from being born before 23 September 1958, you must also live in England or Wales and get one of the following:

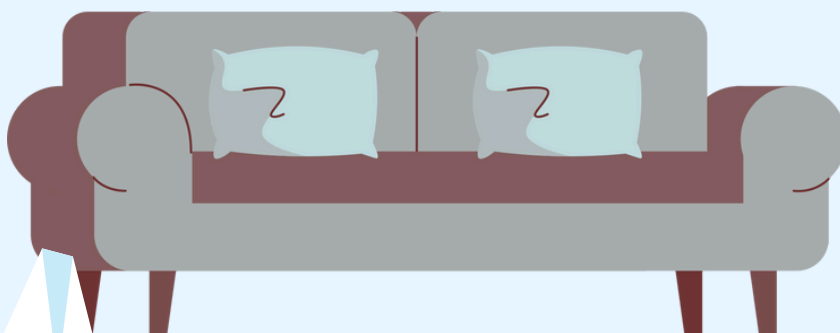
Pension Credit  
Universal Credit  
income-related Employment and Support Allowance (ESA)  
income-based Jobseeker's Allowance (JSA)  
Income Support  
Child Tax Credit  
Working Tax Credit

You'll also need to have been getting a benefit during the qualifying week of 16 to 22 September 2024.

You could also get help from:

- a Cold Weather Payment
- a Warm Home Discount
- a Household Support Fund

Read more about the allowance and whether you are eligible here: [www.gov.uk/winter-fuel-payment](https://www.gov.uk/winter-fuel-payment)



# Defibrillators

Here is a list and maps showing the locations of defibrillators that Witney Town Council maintains. There are many more to be found across the town but these are the ones that the Council has installed, or been gifted or taken on responsibility for and check regularly.

It is worth noting that all WTC maintained defibs are installed on external walls of buildings or other outside places. They are accessible 24 hours a day, 7 days a week.

Our defibrillators are all registered on 'The Circuit' which first responders use when looking for a unit. <https://www.thecircuit.uk/>



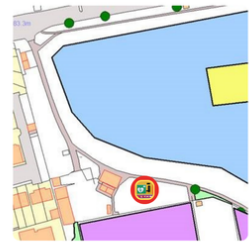
West Witney Sports & Social Club Building  
Outside Wall



West Witney Sports & Social Club Building  
Outside Wall



Burwell Hall - Outside Wall



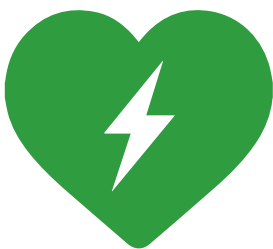
The Leys - Coffee Shed Unit



Witney Lake & Country Park  
Avenue Two Entrance



Witney Town Hall - Market Square  
Left Hand Phone Box



Newland - Kingsfield Crescent  
Lamp Post on Footpath

- 1 West Witney Sports & Social Club Building - Outside Wall
- 2 Burwell Hall - Outside Wall
- 3 The Leys - Coffee Shed Unit
- 4 Witney Lake & Country Park - Avenue Two Entrance
- 5 Witney Town Hall - Market Square - Left Hand Phone Box
- 6 Newland - Kingsfield Crescent - Lamp Post on Footpath



# Winter Crafts



## Paper Snowflakes

Use old paper or recycled materials to cut out intricate snowflake designs. Hang them in your windows for a wintry feel.



## Mason Jar Lantern

Take empty mason jars, fill them with Epsom salt for a snowy effect, and place a tealight candle inside. Decorate the outside with twine or winter-themed stickers for a cozy glow.



## Salt-Dough Ornaments

Make a simple salt dough using flour, salt, and water. Shape it into winter-themed ornaments (like stars or snowmen), bake them, and then paint them once cooled. \*\*These are not edible.

# Decades DISCO

**Saturday 22nd February 2025**  
**7pm to midnight**  
**Corn Exchange Witney**

**£4**  
**TICKETS**  
(+ Booking fee)

70s 80s

90s

2000s

2010s 2020s

**tickets are for  
ages 18 and over**

## **Celebrate 50 years of hits!**

Enjoy a night of nostalgia as we groove through the decades, dancing to the best hits from the 70s, 80s, 90s, and 2000s!

Witney Town Council is hosting this disco night to celebrate our 50th anniversary, so join us for 50 years of music, all for just £4 a ticket.



**WITNEY**  
TOWN COUNCIL  
Celebrating 50 Years

**Tickets soon on**  
**[www.cornexchangewitney.org.uk](http://www.cornexchangewitney.org.uk)**



# YOUNG ELTON

## THE TRIBUTE SHOW



**CORN EXCHANGE WITNEY  
FRIDAY 21st FEBRUARY**

**TICKETS £14.50 + BOOKING FEE**

**DOORS 19:30 / SHOW 20:00**

**[WWW.CORNEXCHANGEWITNEY.ORG.UK](http://WWW.CORNEXCHANGEWITNEY.ORG.UK)**



CORN EXCHANGE WITNEY PRESENTS

# DAYTIME CINEMA

EVERY OTHER TUESDAY  
1PM SCREENINGS

**COMING UP...**

**SHAWSHANK REDEMPTION**

7TH JANUARY

**HUNT FOR THE WILDERPEOPLE**

21ST JANUARY

**THE LIFE AQUATIC**

4TH FEBUARY

**THE BEST EXOTIC MARIGOLD HOTEL**

18TH FEBUARY

**TICKETS JUST £4!**

AVAILABLE ONLINE OR ON THE DOOR!

VISIT [WWW.CORNEXCHANGEWITNEY.ORG.UK](http://WWW.CORNEXCHANGEWITNEY.ORG.UK) OR SCAN QR



# Community Speedwatch



Witney had another successful and positive Community Speedwatch session recently. Volunteers monitored the speed of almost three hundred vehicles. As before, the majority of drivers were travelling at safe and responsible speeds.

Local residents were pleased to see the Speedwatch team and keen to thank them for helping to make the community safer, by encouraging motorists to be aware of their speed.

More sessions are planned and if this is something you would like to get involved with, please contact the Witney Traffic Advisory Committee, via the town council, on 01993 704379. You can find out more about Community Speedwatch on their website: [Community Speedwatch](#)



# Is your child 3 or 4 years old?

## Primary school place – you must apply now

If your child was born on or between **1 September 2020** and **31 August 2021**, you need to apply for a primary school place now.

You must still apply even if your child already attends a nursery attached to the school.

Deadline for applications is **15 January 2025**.

## Apply online at

[www.oxfordshire.gov.uk/  
primaryadmissions](http://www.oxfordshire.gov.uk/primaryadmissions)

– it's quick, easy and secure.

You can get free access to the internet at many of our libraries and children's centres – ask for details at your local facility.

### For help and information:

Web: [www.oxfordshire.gov.uk/primaryadmissions](http://www.oxfordshire.gov.uk/primaryadmissions)

Email: [admissions.schools@oxfordshire.gov.uk](mailto:admissions.schools@oxfordshire.gov.uk)

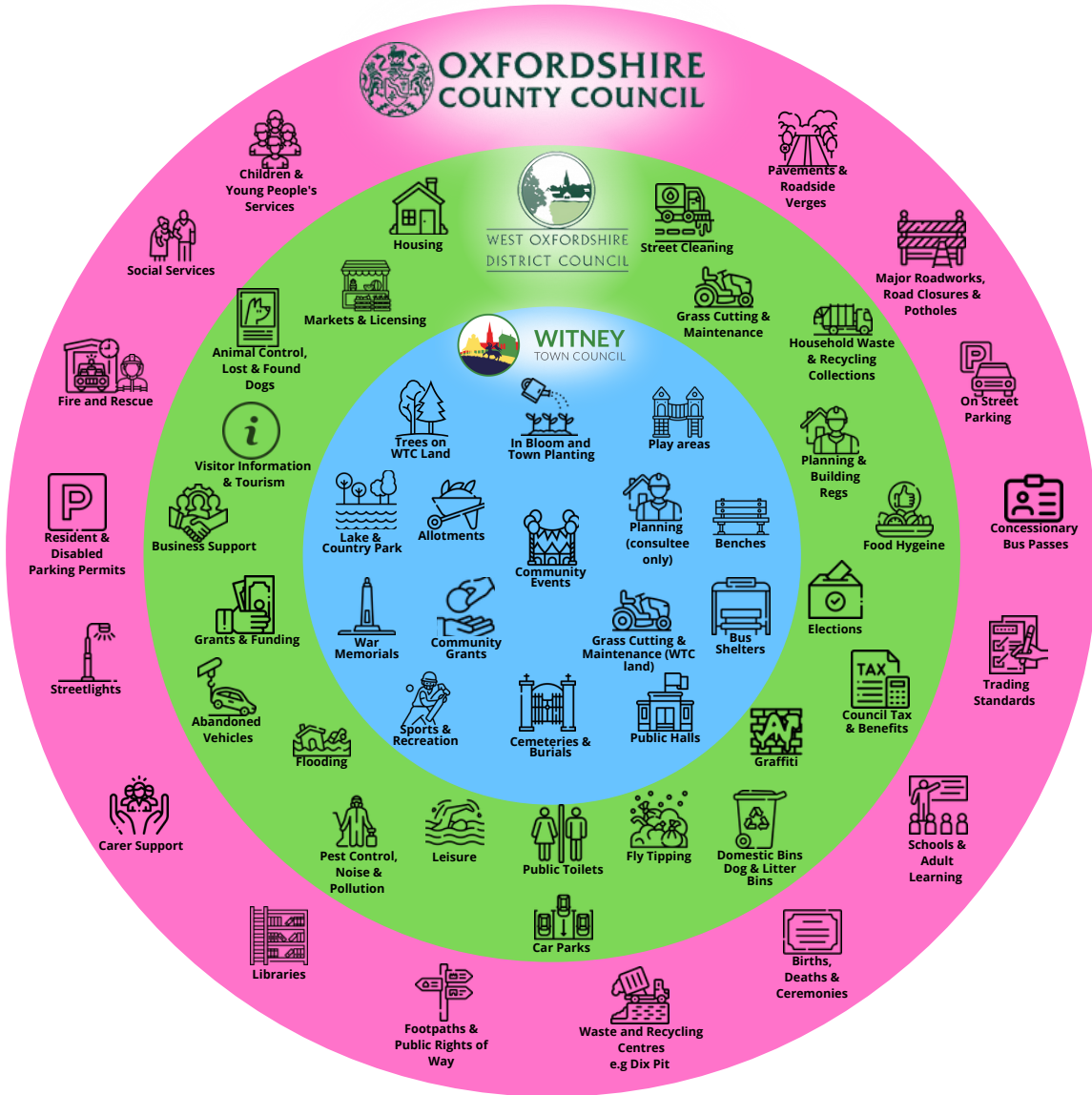
Tel: **0345 241 2487**



OXFORDSHIRE  
COUNTY COUNCIL

# Who Does What?

Below shows the different services provided by local councils, Town, District and County serving Witney




**Fix My Street**

[Click here](#) ↑

Fix My Street is a website where you can report a problem in your local area. Examples can be pavements, roads, street furniture, or lighting. The website will direct the problem to the organisation responsible.



Contact form on OCC website  
01865 792422

General Enquiries Number  
8.30am - 5pm, Monday - Thursday and  
8.30am - 4pm Friday



customer.services@westoxon.gov.uk  
01993 861000

Available from 9am to 2pm  
Monday to Friday



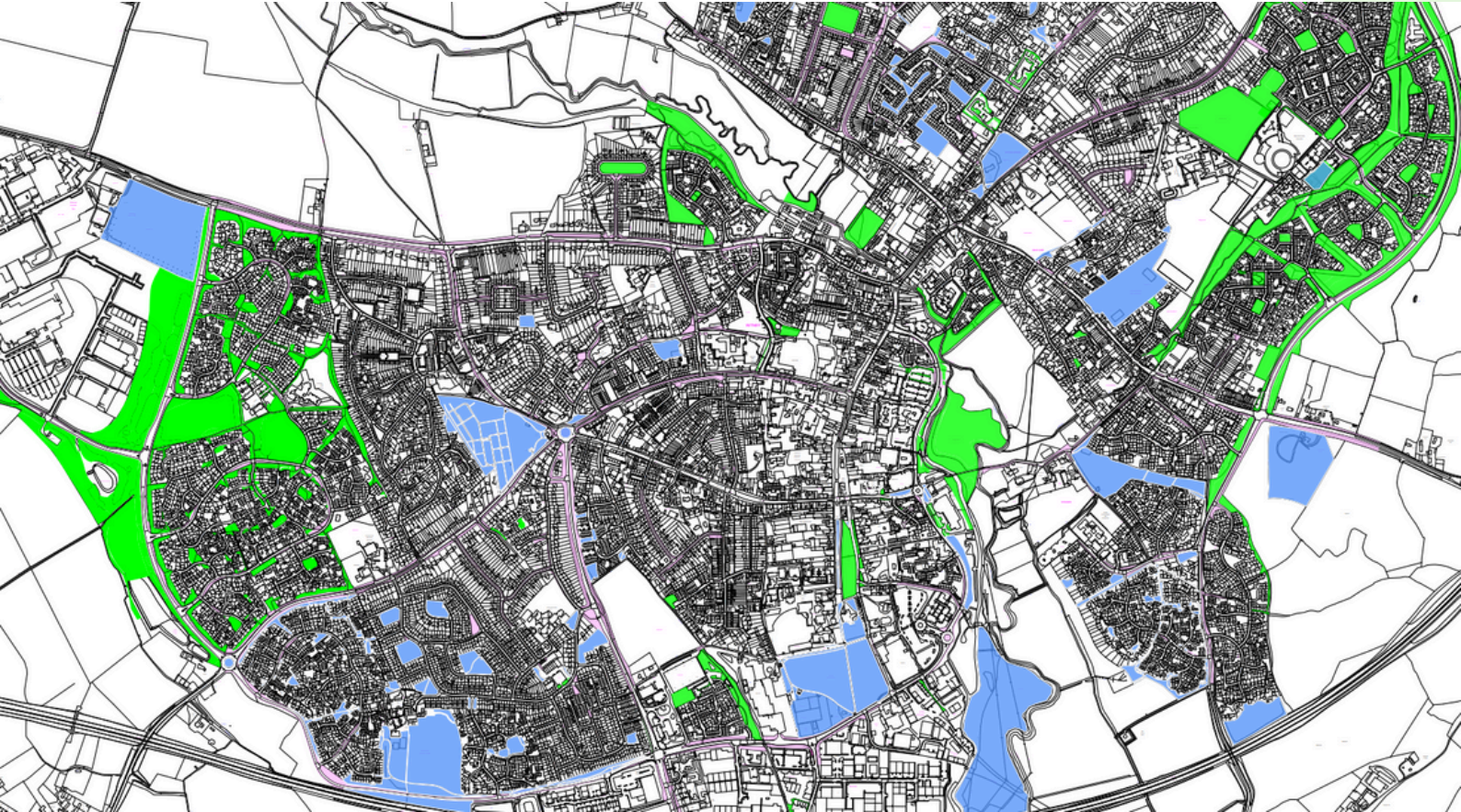
WITNEY TOWN COUNCIL  
info@witney-tc.gov.uk  
01993 704379

Available from 9am to 5pm Monday to Thursday,  
9am to 4.30pm Friday

For further information or phone numbers on specific enquiries, please refer to each council's website

# Council Land Responsibility Map

Below shows the different land owned by local councils,  
Town, District and County serving Witney



## Key:



Above you will find a snapshot of the Council Land Responsibility Map. This is a document where you can find which Council owns what land, and who to contact if you have an issue.

The document is large and must be zoomed into for smaller areas of land. You can find the document on our webpage here: <https://www.witney-tc.gov.uk/wp-content/uploads/2015/10/Existing-land-responsibilities-Witney.pdf>

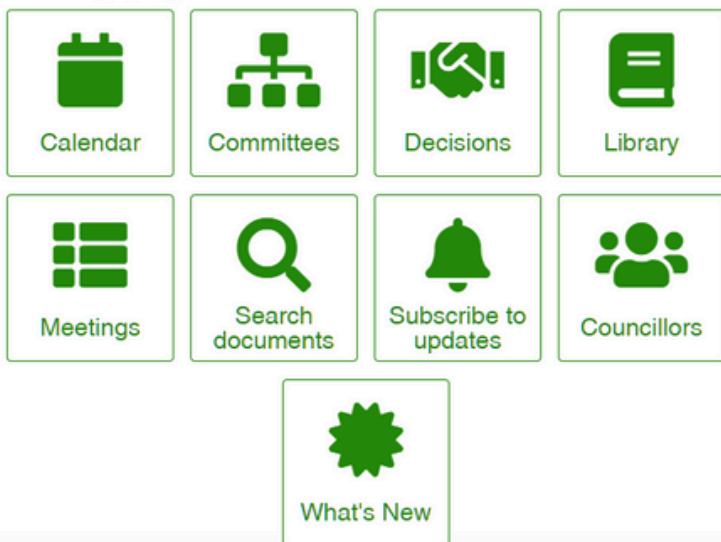
# INFORMATION ABOUT YOUR TOWN COUNCIL



**WITNEY**  
TOWN COUNCIL

You are here: Meetings, agenda, minutes

## Meetings, agendas and minutes



Calendar
Committees
Decisions
Election results
Library
Meetings
Search documents
Subscribe to updates
Councillors
What's New
Logon

It's easy to keep up to date with our meetings and the agendas, minutes and reports that pertain to them. You'll find information on our councillors, important documents and information, and you can also subscribe to updates here.

**CLICK THE IMAGE**

If you are one of our partner organisations, or receive grant funding from Witney Town Council and would like to submit an article about your organisation, please contact [communications@witney-tc.gov.uk](mailto:communications@witney-tc.gov.uk).

Our Spring edition is always tight on space as it is a paper version and contains information about how the Town Council spends money as well as a Residents' Satisfaction Survey, but we can offer space in other issues. The Newsletter is currently issued quarterly.



## SIGN UP TO THE NEWSLETTER

You can sign up to receive digital issues of our newsletter. Drop an email to [communications@witney-tc.gov.uk](mailto:communications@witney-tc.gov.uk) with the subject line - Newsletter sign up.

## NEXT TIME

Our next issue is due in Winter. Let us know what you would like to see more of.