

# WHAT CAN YOU SEE?/HEAR

While you are walking around the lake keep your eyes peeled for unusual things. You might see:

- a bright flash of bright blue crossing the water -a kingfisher
- small brown birds running up a tree trunk like a mouse-these are tree creepers
- fish jumping
- dragonflies



When you get a little way round the lake find a quiet spot away from the water's edge and stand still and listen. What can you hear?

- Trees or grass rustling
- Water lapping or trickling
- Songbirds singing
- Water birds calling - gulls or ducks

Try this on a day with different weather. Do you see and hear different things on wet days?

# WITNEY LAKE MAP

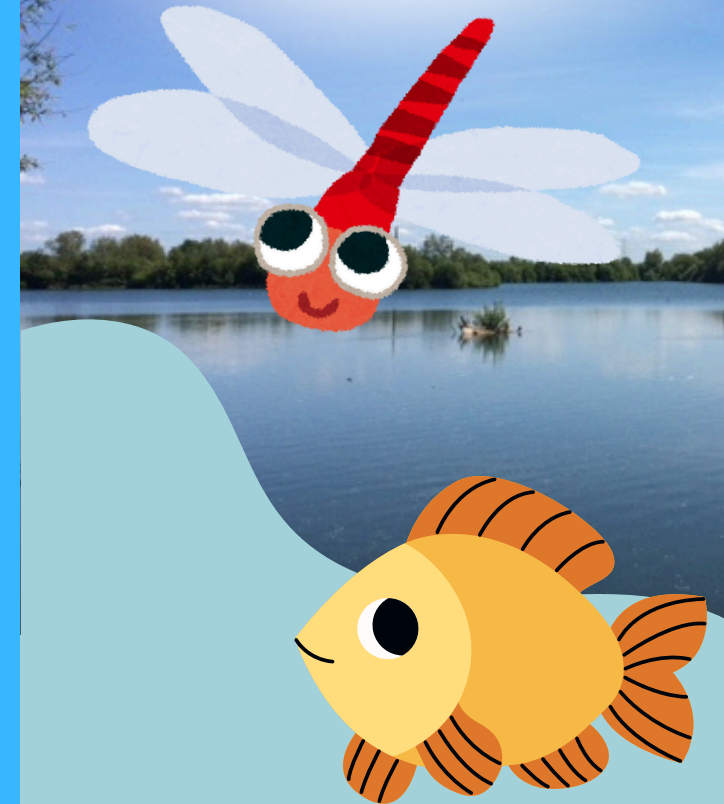


## CAN YOU FIND THEM ALL?

Take a walk around the lake and try to spot all info and rubbing posts ! Don't forget to take our Interactive Wild Trail booklet and a pencil or crayon with you

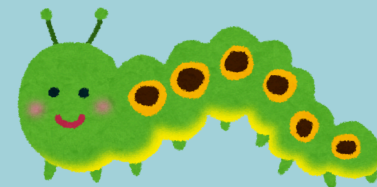


**WITNEY**  
TOWN COUNCIL



COME AND EXPLORE THE

# WITNEY LAKE & COUNTRY PARK



# JOKES AROUND THE LAKE

What time do ducks get up in the morning?



The quack of dawn!



What do you call a bee that is hard to understand?



A mumble bee!



What do you call a musical insect?

A humbug!



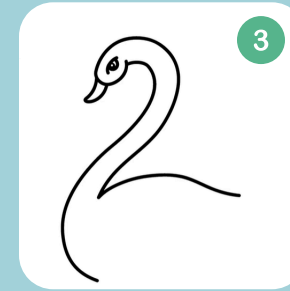
# SPOT

the difference



There are 8 differences between these two pictures. Can you spot them all?  
answers on the swan page

# HOW TO DRAW A SWAN



- 1 Draw a curvy number 2
- 2 Add a beak and an eye
- 3 draw the neck down to the body
- 4 finish the body
- 5 add the tail and wing feathers
- 6 colour in the beak and wing.



SPOT THE DIFFERENCE 1 Cloud is missing, 2 The geese are flying the other way, 3 The butterfly is missing 4 There is an extra duckling, 5 There is an oar in the boat, 6 The fish is a different colour, 7 There are extra bullrushes, 8 The frog has become a terrapin.



**WITNEY**  
TOWN COUNCIL



Find out more about the lake and country park by scanning this code to visit the website.

Send us a lake joke or your swan picture and tell us your favourite thing, or least favourite thing about the lake & country park email [info@witney-tc.gov.uk](mailto:info@witney-tc.gov.uk)

